

We wrapped up Bike Park operations last week and what a season it was. We introduced more people to the sport this season than in summers past, had 0 employee injuries and reintroduced in-season events!

As we say goodbye to the summer season, we also say “until next time” to the summer edition of the Word. Starting Oct. 18th we will move to our weekly winter cadence.

Thanks Mike and congrats!

We want to extend a huge congratulations to our own Mike Douglas! Mike has accepted a position as the Head Mighty Mite Coach at Stevens Pass Alpine Club. We are very excited for him and his family and a bit sad for us and the SSBS family. Happily, Mike will be staying at Stevens Pass and don't be surprised if you see him doing some on-hill training for us. Best Wishes to Mike!

Wanted: Kick-As* Training Specialist

These positions are very coveted for those wanting a career in snowsport instruction and who have long-term aspirations for education leadership positions in PSIA-AASI. We are very excited to see who might be interested in joining the SP family. We expect the job posting to be up soon. Please take a look or reach out if you are interested and pass along word about this opportunity to anyone you respect as an athlete and teacher.

Fall Gear Swap

Looking to pass on some gently used gear? Or, need to update and expand your own gear inventory? Leavenworth Winter Sports Club is hosting a gear swap!

Sunday, October 20th

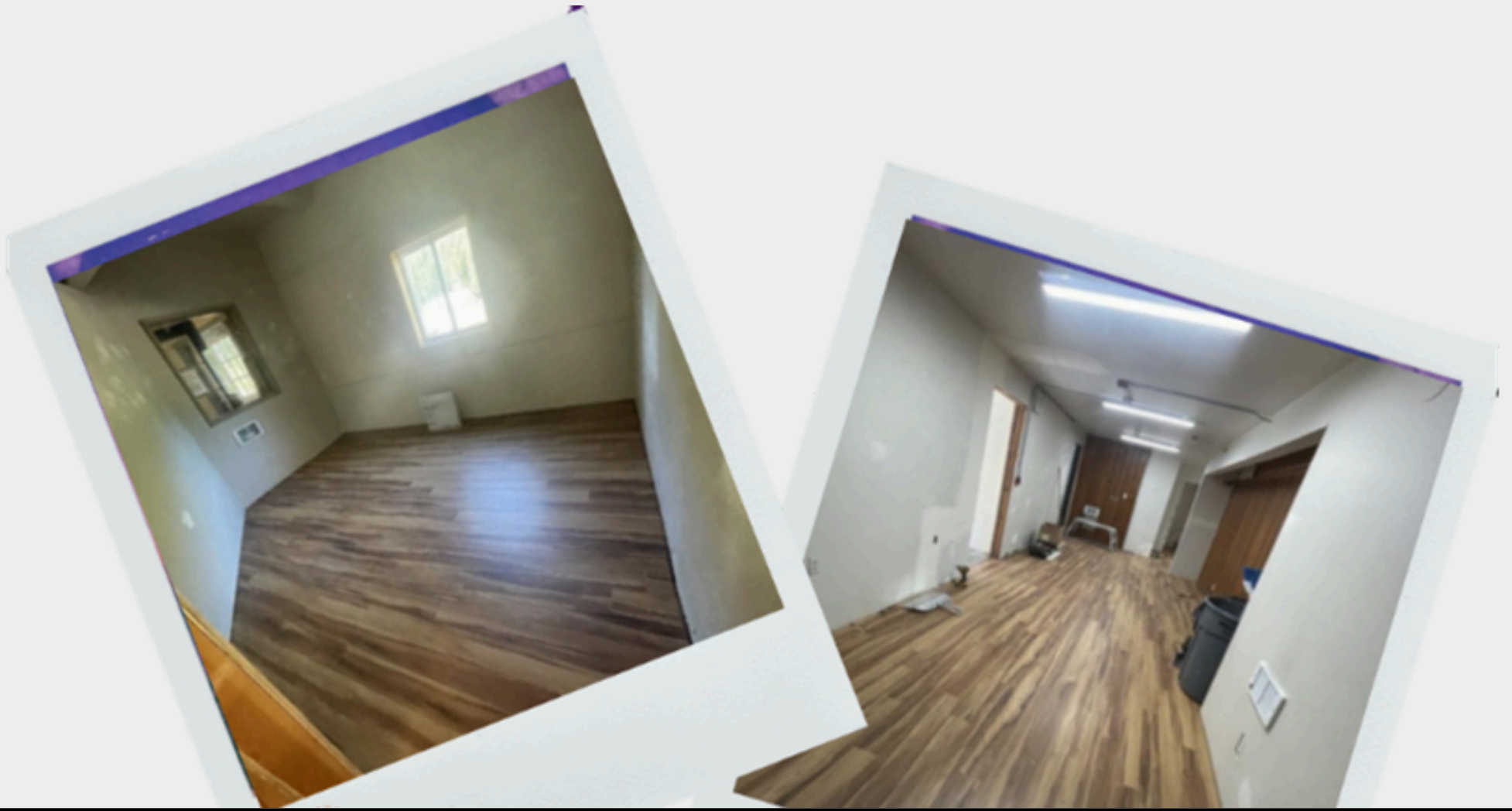
12pm-3pm

Admission *Free to attendees*



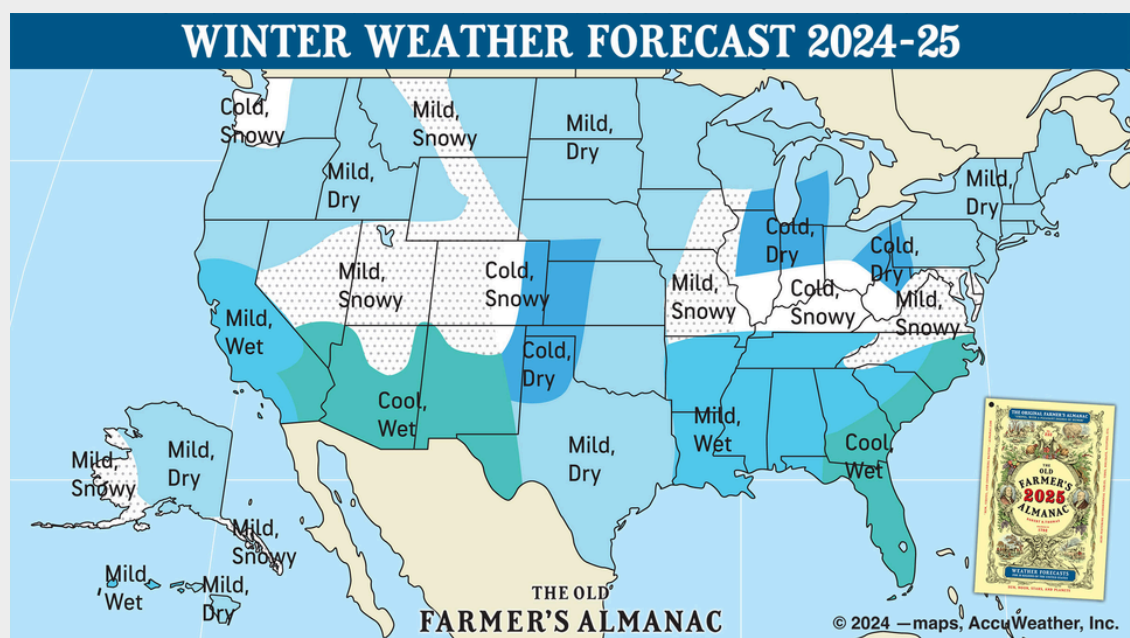
Yodelin Sneak Peek

The renovation project at Yodelin Lodge is making great progress. Sewer lines have been replaced, fire systems have been upgraded and new doors, flooring and lighting have been installed. Soon, it will be ready for employees to move in and stay for the winter!



Will There Be Snow?

Precipitation and snowfall will be above average in the north and below average in the south. The snowiest periods will be late December, early January, and early February.



How Cold Will Winter Be?

Winter temperatures will be colder than normal in the north and warmer in the south. The coldest periods will fall in early and late January and early March.

What is your prediction?

When will Stevens Pass receive it's first snowfall? Send your best guess to SPSchoolstaff@vailresorts.com. The person who comes the closest will win a prize!

Email: SPSchoolStaff@VailResorts.com