

# THE WORD

November 21  
Issue 6 | 24'-25'

Tomorrow marks our last indoor training session before we shift our focus to on-snow! More news coming soon.

As the snow continues to fall at the resort, our mountain ops team is keeping a close watch. There is a strong chance that we will open early and, if that call is made, we will let you know as soon as we know. In the meantime, you can keep an eye on the resort's social media channels and our resort's webcams for progress updates.

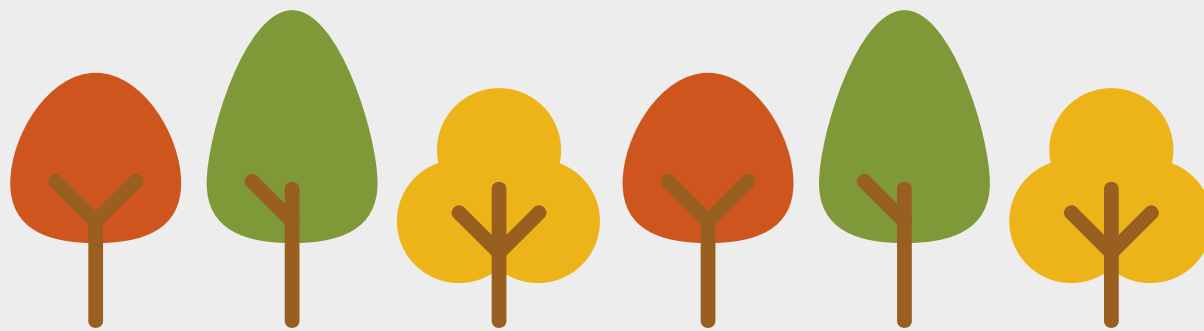
## On-Snow Readiness

As we near opening and/or on-snow training, we want to make sure you have all the pieces/info to be successful.

First, if you missed picking up your **uniform**, we can pull this for you ahead of time. Simply let us know via email along with your sizes.

For **employee season passes**: if you have yours from last season, those should activate upon completion of all required onboarding tasks. For new employees, you can pick these up at the Granite Peaks Lodge pass office.

Having an active employee season pass is needed to ski/ride the mountain, to check your schedule, and to access on mountain discounts in F&B and our Retail outlets.



## Welcome to Winter - Harvest Lunch

You are invited to join us **Wednesday, Nov. 27th from 10:00a–2:00p**, for an all-employee winter kick-off event. Join your fellow resort employees to learn more about the upcoming season and celebrate with a meal together. We hope to see you there.

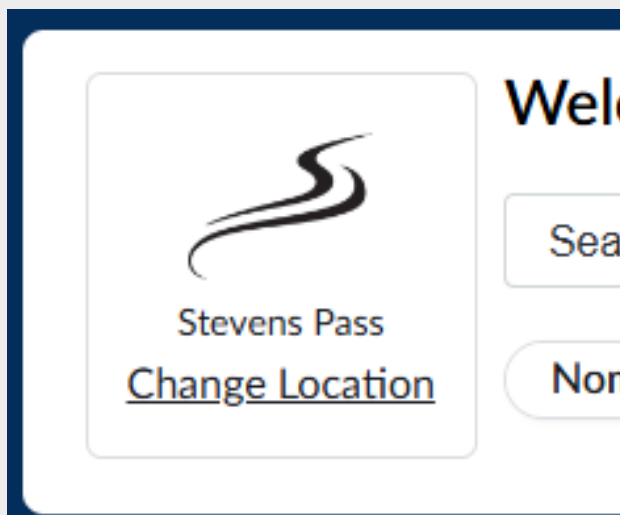
Event will be held in the Granite Peaks Lodge.

Email: [SPSchoolStaff@VailResorts.com](mailto:SPSchoolStaff@VailResorts.com)



## Employee Transit - Shuttle Schedule

The employee transit schedule is live and ready for view. You can find this [here](#) or, in the future, by navigating via Epic Employee -> Stevens Pass -> Transportation (it currently shows last years schedule).



### Transportation

Understanding local transportation can be challenging. From buses, shuttles, airports, transit maps, road conditions,

Some call-outs are below:

- Morning shuttle arrival times have been adjusted to 6:50am and 7:50am to accommodate shift starts at 7am and 8am.
- If arriving before your scheduled start time, please feel free to utilize our employee spaces before punching in.
- The Baring Store stop has been removed. EEs who previously would have ridden from the Baring Store are encouraged to board the bus at the Gold Bar Park and Ride or in Skykomish.
- The Wenatchee stop has been removed. EEs who previously would have ridden from Wenatchee are encouraged to board the bus at the Big Y Park and Ride. EEs who need help getting from Wenatchee to the Big Y are encouraged to use Link Transit.

In addition to employee provided transit, we have new carpool sheet that we are working on. Stay tuned!

## Employee Perk - Mountain Exchange

In addition to the Vail Resorts that your employee pass gets you access to, Stevens Pass is also a part of the PNSAA Mountain Exchange network.

If you are looking for an opportunity to ski/ride for free at other PNW resorts, look no further. Simply [fill out this form](#) and follow the steps.

Email: [SPSchoolStaff@VailResorts.com](mailto:SPSchoolStaff@VailResorts.com)