

Thank you for your participation in our indoor training sessions! Tomorrow marks **Opening Day** followed by our first outdoor training session this weekend!

With a 65" base and the upcoming weather forecast, the mountain ops team made the decision to open early. The Ski & Snowboard School is prepared to start group and private lessons, thank you for your flexibility for those we have scheduled for this week!

On-Snow Readiness

Now that we are confirmed to open early, we want to ensure that you have everything you need to be successful on your first day.

If you missed picking up your **uniform** or you need to exchange sizes, please e-mail us with your size and we can pull these for you to have available in the locker room. For those who requested a uniform size exchange, these will not be available until next week.

For employee **season passes**: if you have yours from last season, those should activate upon completion of all required onboarding tasks. For new employees, you can pick these up at the Granite Peaks Lodge pass office. Having an active employee season pass is needed to ski/ride the mountain, to check your schedule, and to access on mountain discounts in F&B and our Retail outlets.

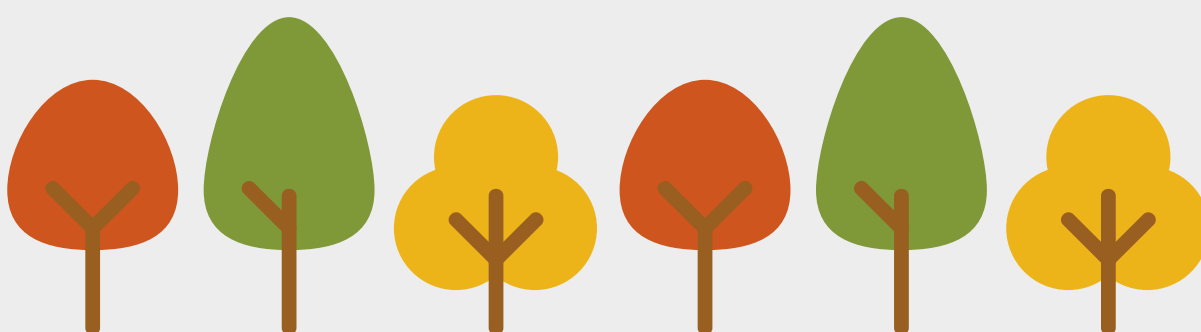
Ensure that you are taking care of yourself as you prepare to be back on the slopes with some **physical and mental health** resources:

[Back in Action](#)

[Epic Wellness and Employee Assistance](#)

[InsightTimer](#)

[Down Dog](#)



Happy Thanksgiving & Opening Day!

Cheers to some good food, company, rest...
and mountain time starting Friday, November 29!



Employee Transit - Shuttle & Parking Passes

The **employee shuttle** has started for both the east and westside and will arrive at the resort at 6:50am and 7:50am and depart at 4:30pm and 5:30pm. You can find the employee transit schedule [here](#).

For **employee parking passes**, please ensure that you register your vehicle (up to 2 vehicles per employee/pass) and begin parking in Lot C. For those with registered vehicles and lockers, your parking pass is on the outside of your locker. Check with your supervisor or [Bonnie](#) to ensure you have received your parking pass.

We have a new [carpool sign-up sheet](#) and [carpool list](#) for those interested in ridesharing to the mountain, trainings, or other activities. This is a work in progress, we appreciate your patience and feedback!

Employee Perk - Equipment Tuning

Active employees receive a 50% discount on ski and snowboard **equipment tuning** for the 2024-2025 season in the Stevens Pass rental, tune, and repair shop!

Please plan to provide your employee ID and anticipate a 2-3-day turnaround time on services. Equipment can be dropped off or picked-up on weekends but will not be serviced until a weekday (M-F only).

Click [here](#) for more information on this Vail Resort employee perk.



The [EpicPromise Employee Foundation](#) offers [EpicPromise Scholars](#), a **multi-year scholarship** of up to US \$10,000 for the dependents of US and Canadian-based Vail Resorts employees pursuing an undergraduate degree. If your student is a senior in high school, or already enrolled in an undergraduate degree program, they may be eligible to apply.

Learn more about the **EpicPromise Scholars** [here](#)!

Accepting applications December 9, 2024 - January 10, 2025