

We hope everyone is enjoying the holidays and some rest!  
Thank you for a successful first month out on the mountain.

As we head into the New Year, please plan ahead and be prepared  
before coming to the mountain and check your work schedule regularly.  
Cheers to a safe and healthy New Year!

## December 28: SSBS Staff Party



We are looking forward to celebrating the holidays and kicking-off the  
New Year with you this Saturday, December 28! We will have snacks,  
treats, beverages and a few activities at the SSBS from 8am-4pm.

We hope you can join us!

## Checking Schedules

Now that our ski and snowboard season is underway, we want to ensure  
that everyone is checking their schedules regularly.

To check your schedule, go online to:

**[instructor.snow.com](https://instructor.snow.com)**

**Pass Number:** use your current season's lift pass number

**Password:** \$noW2425

If you are having difficulties logging in, please let us know.

If you are unable to make it to your scheduled shift,

please email us as soon as possible:

**[SPSchoolStaff@vailresorts.com](mailto:SPSchoolStaff@vailresorts.com)**



## Employee Perk:

### The Mountaineer Lodge

Stevens Pass employees have access to The Mountaineer Lodge, which is nearby the resort and offers a ski-in/ski-out lodge and a relaxing getaway cabin in the woods.



You can learn more about The Mountaineer Lodge [here](#), and obtain a **25% off employee discount** by using the promo code **LOSL25PRO25** when paying for your lodge reservation.

## 2025 Town Hall Series with Tami

Join Tami for the first SBSS first Town Hall:

**Thursday, January 2, 2025**

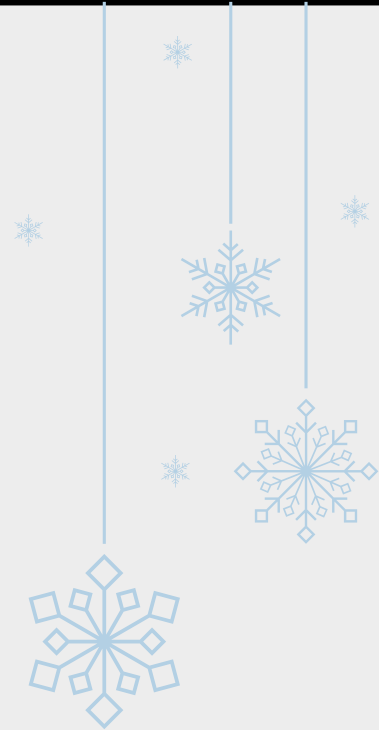
**6:30-7:30pm**

via Microsoft Teams

**Join the meeting now**

Meeting ID: 228 417 750 714

Passcode: mx7K7Sj2



This is the first monthly Town Hall and provides employees with the opportunity to discuss training topics and ask questions.

*These sessions are optional for employees.*



Don't Forget to  
**Pick-up Your Employee Gift!**  
@ the Bird's Nest Employee Store